

Codice	€	D	L (mm)	B (mm)	A (mm)	T (mm)	H (mm)	Cava (mm)
C601250085	---	M20	225	150	19,7	40	16	20
C601250090	---	M20	250	150	19,7	40	16	20
C601250095	---	M20	300	190	19,7	40	16	20
C601250100	---	M24	120	75	23,7	44	20	24
C601250105	---	M24	150	100	23,7	44	20	24

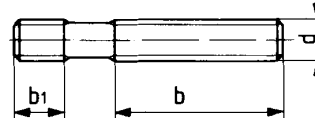
Codice	€	D	L (mm)	B (mm)	A (mm)	T (mm)	H (mm)	Cava (mm)
C601250110	---	M24	200	125	23,7	44	20	24
C601250115	---	M24	225	150	23,7	44	20	24
C601250120	---	M24	250	150	23,7	44	20	24
C601250125	---	M24	300	190	23,7	44	20	24

2

format Prigioniero singolo

Prigioniero singolo in acciaio 42CrMoS4, da M6-M12 classe 10.9 e M14-M24 classe 8.8, filettatura rollata, DIN 6379.

DIN 6379



Codice	€	d	b (mm)	L (mm)	b1 (mm)
C609010001	---	M6	16	32	9
C609010003	---	M6	30	40	9
C609010005	---	M6	50	50	9
C609010006	---	M8	20	63	11
C609010007	---	M8	40	80	11
C609010008	---	M8	63	40	11
C609010011	---	M8	75	63	11
C609010009	---	M8	100	80	11
C609010010	---	M10	25	100	13
C609010020	---	M10	50	125	13
C609010030	---	M10	75	160	13
C609010040	---	M10	122	200	13
C609010050	---	M12	25	50	15
C609010060	---	M12	32	63	15
C609010070	---	M12	50	80	15
C609010080	---	M12	63	100	15
C609010090	---	M12	75	125	15
C609010100	---	M12	122	200	15
C609010110	---	M14	32	63	17
C609010115	---	M14	50	80	17

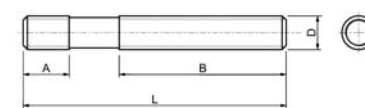
Codice	€	d	b (mm)	L (mm)	b1 (mm)
C609010120	---	M14	63	100	17
C609010125	---	M14	75	125	17
C609010130	---	M14	100	160	17
C609010135	---	M14	160	250	17
C609010140	---	M16	32	63	19
C609010150	---	M16	50	80	19
C609010160	---	M16	63	100	19
C609010170	---	M16	75	125	19
C609010180	---	M16	100	160	19
C609010190	---	M16	160	250	19
C609010200	---	M20	32	80	27
C609010210	---	M20	70	125	27
C609010220	---	M20	122	200	27
C609010230	---	M20	160	250	27
C609010240	---	M20	190	315	27
C609010250	---	M20	315	500	27
C609010300	---	M24	45	100	35
C609010310	---	M24	100	160	35
C609010320	---	M24	160	250	35
C609010330	---	M24	250	400	35



Prigioniero singolo

Prigioniero singolo in acciaio 42CrMoS4, classe 10.9, filettatura rollata, DIN 6379.

DIN 6379



Codice	€	D	L (mm)	A (mm)	B (mm)
C601200005	---	M8	40	11	20
C601200010	---	M8	63	11	40
C601200015	---	M8	80	11	50
C601200020	---	M8	100	11	63
C601200025	---	M8	125	11	75
C601200030	---	M8	160	11	100
C601200035	---	M8	200	11	100
C601200040	---	M10	50	13	25
C601200045	---	M10	63	13	35
C601200050	---	M10	80	13	50
C601200055	---	M10	100	13	75
C601200060	---	M10	120	13	75
C601200065	---	M10	160	13	100
C601200070	---	M10	200	13	125
C601200075	---	M12	50	15	25
C601200080	---	M12	63	15	32
C601200085	---	M12	80	15	50
C601200090	---	M12	100	15	63
C601200095	---	M12	125	15	75
C601200100	---	M12	160	15	100
C601200105	---	M12	200	15	125
C601200110	---	M12	225	15	160
C601200115	---	M12	250	15	160
C601200120	---	M14	63	17	32
C601200125	---	M14	80	17	50
C601200130	---	M14	100	17	63
C601200135	---	M14	125	17	75
C601200140	---	M14	160	17	100
C601200145	---	M14	200	17	125
C601200150	---	M14	225	17	160

Codice	€	D	L (mm)	A (mm)	B (mm)
C601200155	---	M14	250	17	160
C601200160	---	M16	63	19	35
C601200165	---	M16	80	19	50
C601200170	---	M16	100	19	63
C601200175	---	M16	125	19	75
C601200180	---	M16	160	19	100
C601200185	---	M16	200	19	125
C601200190	---	M16	225	19	160
C601200195	---	M16	250	19	160
C601200200	---	M16	315	19	180
C601200205	---	M18	80	23	50
C601200210	---	M18	100	23	50
C601200215	---	M18	125	23	75
C601200220	---	M18	160	23	100
C601200225	---	M18	200	23	125
C601200230	---	M18	225	23	150
C601200235	---	M18	250	23	150
C601200240	---	M18	315	23	180
C601200245	---	M20	80	27	30
C601200250	---	M20	125	27	70
C601200255	---	M20	160	27	100
C601200260	---	M20	200	27	125
C601200265	---	M20	225	27	160
C601200270	---	M20	250	27	160
C601200275	---	M20	315	27	200
C601200280	---	M22	100	31	45
C601200285	---	M22	120	31	63
C601200290	---	M22	160	31	100
C601200295	---	M22	200	31	125
C601200300	---	M22	225	31	160



Morse e tavole per macchina • **Fissaggio e staffaggio** • Magneti • Mandrini idraulici e mandrini a forte serraggio • Mandrini HSK • Mandrini DIN ISO 7388-1 (ex DIN 69871) • Mandrini MAS-BT • Mandrini DIN 2080 • Pinze di serraggio ER • Accessori per mandrini • Codoli per mandrini • Teste ad angolo e moltiplicatori • Calettamento, bilanciatura e presetting • Tastatori e centrori • Schermi di protezione • Sbavatori • Lampade • Marcatura

← Pagina precedente

Codice	€	D	L (mm)	A (mm)	B (mm)
C601200305	---	M22	250	31	160
C601200310	---	M22	315	31	180
C601200315	---	M24	100	35	45
C601200320	---	M24	125	35	70
C601200325	---	M24	160	35	100
C601200330	---	M24	200	35	125
C601200335	---	M24	225	35	125
C601200340	---	M24	250	35	160
C601200345	---	M24	315	35	180
C601200350	---	M27	125	39	56
C601200355	---	M27	150	39	80
C601200360	---	M27	200	39	125
C601200365	---	M27	225	39	160
C601200370	---	M27	250	39	160
C601200375	---	M27	315	39	200
C601200380	---	M27	400	39	250

Codice	€	D	L (mm)	A (mm)	B (mm)
C601200385	---	M27	500	39	315
C601200390	---	M30	125	43	56
C601200395	---	M30	150	43	80
C601200400	---	M30	200	43	125
C601200405	---	M30	250	43	160
C601200410	---	M30	315	43	200
C601200415	---	M30	400	43	250
C601200420	---	M30	500	43	315
C601200425	---	M30	700	43	400
C601200430	---	M36	160	51	80
C601200435	---	M36	200	51	125
C601200440	---	M36	250	51	160
C601200445	---	M36	315	51	200
C601200450	---	M36	400	51	250
C601200455	---	M36	500	51	315
C601200460	---	M36	700	51	400

A richiesta fornibili prigionieri a disegno.



Dado esagonale

Dado esagonale, in acciaio automatico da bonifica.



Codice	€	Pz.	M	S (mm)	E (mm)	H (mm)
C602050080	---	10	8	13	14,8	8
C602050100	---	10	10	17	19,6	10
C602050120	---	10	12	19	21,5	12
C602050140	---	10	14	22	25	14
C602050160	---	10	16	24	27,5	16
C602050180	---	10	18	27	31	18
C602050200	---	10	20	30	34,6	20

Codice	€	Pz.	M	S (mm)	E (mm)	H (mm)
C602050220	---	10	22	32	36,9	22
C602050240	---	1	24	36	41,6	24
C602050270	---	1	27	41	47,3	27
C602050300	---	1	30	46	53,1	30
C602050360	---	1	36	55	63,5	36
C602050420	---	1	42	65	75	42
C602050480	---	1	48	75	86,5	48

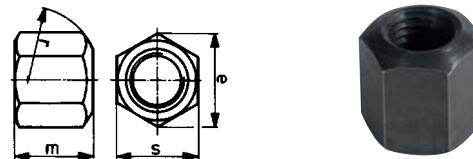


Dado esagonale alto

Dado esagonale alto, in acciaio automatico da bonifica, altezza 1,5xd, DIN 6330B.



DIN 6330B



Codice	€	M	e (mm)	m (mm)	r (mm)	S (mm)
C608060005	---	6	11,05	9	9	10
C608060010	---	8	14,4	12	12	13
C608060020	---	10	17,8	15	15	16
C608060030	---	10*	18,9	15	15	17
C608060040	---	12	20,03	18	17	18
C608060050	---	12*	21,1	18	17	19
C608060060	---	14	23,4	21	20	21

Codice	€	M	e (mm)	m (mm)	r (mm)	S (mm)
C608060070	---	14*	24,5	21	20	22
C608060080	---	16	26,8	24	22	24
C608060090	---	18	30,1	27	24	27
C608060100	---	20	33,5	30	27	30
C608060110	---	22*	35,7	33	30	32
C608060120	---	22	37,7	33	30	34
C608060130	---	24	40	36	32	36

*Vecchia norma DIN.

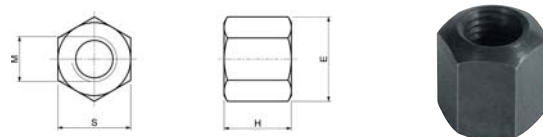


Dado esagonale alto

Dado esagonale alto, in acciaio automatico da bonifica, altezza 1,5xd, DIN 6330B.



DIN 6330B



Codice	€	Pz.	M	S (mm)	E (mm)	H (mm)
C602100060	---	10	6	10	11,5	9
C602100080	---	10	8	13	14,8	12
C602100100	---	10	10	17	19,6	15
C602100120	---	10	12	19	21,5	18
C602100140	---	10	14	22	25	21
C602100160	---	10	16	24	27,5	24
C602100180	---	10	18	27	31	27
C602100200	---	10	20	30	34,6	30

Codice	€	Pz.	M	S (mm)	E (mm)	H (mm)
C602100220	---	10	22	32	36,9	33
C602100240	---	10	24	36	41,6	36
C602100270	---	1	27	41	47,3	40
C602100300	---	1	30	46	53,1	45
C602100360	---	1	36	55	63,5	54
C602100420	---	1	42	65	75	63
C602100480	---	1	48	75	86,5	72