

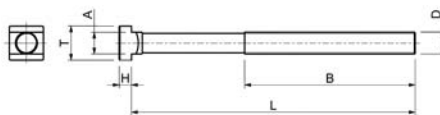


Morse e tavole per macchina • **Fissaggio e staffaggio** • Magneti • Mandrini idraulici e mandrini a forte serraggio • Mandrini HSK • Mandrini DIN ISO 7388-1 (ex DIN 69871) • Mandrini MAS-BT • Mandrini DIN 2080 • Pinze di serraggio ER • Accessori per mandrini • Codoli per mandrini • Teste ad angolo e moltiplicatori • Calettamento, bilanciatura e presetting • Tastatori e centratori • Schermi di protezione • Sbvatori • Lampade • Marcatura



Vite per cave a T

Vite per cave a T, in acciaio 42CrMoS4, **classe 10.9**, filettatura rollata.



Codice	€	D	L (mm)	B (mm)	A (mm)	T (mm)	H (mm)	Cava (mm)
C601100005	---	M10	40	30	9,7	15	6	10
C601100010	---	M10	63	45	9,7	15	6	10
C601100015	---	M10	80	55	9,7	15	6	10
C601100020	---	M10	100	60	9,7	15	6	10
C601100025	---	M10	125	75	9,7	15	6	10
C601100030	---	M10	150	100	9,7	15	6	10
C601100035	---	M10	170	100	9,7	15	6	10
C601100040	---	M12	50	35	11,7	18	7	12
C601100045	---	M12	63	45	11,7	18	7	12
C601100050	---	M12	80	55	11,7	18	7	12
C601100055	---	M12	100	60	11,7	18	7	12
C601100060	---	M12	125	75	11,7	18	7	12
C601100065	---	M12	150	100	11,7	18	7	12
C601100070	---	M12	170	100	11,7	18	7	12
C601100075	---	M12	200	120	11,7	18	7	12
C601100080	---	M14	63	40	13,7	22	8	14
C601100085	---	M14	80	55	13,7	22	8	14
C601100090	---	M14	100	65	13,7	22	8	14
C601100095	---	M14	125	75	13,7	22	8	14
C601100100	---	M14	150	100	13,7	22	8	14
C601100105	---	M14	170	100	13,7	22	8	14
C601100110	---	M14	200	125	13,7	22	8	14
C601100115	---	M14	230	150	13,7	22	8	14
C601100120	---	M16	63	45	15,7	25	9	16
C601100125	---	M16	80	55	15,7	25	9	16
C601100130	---	M16	100	63	15,7	25	9	16
C601100135	---	M16	125	75	15,7	25	9	16
C601100140	---	M16	150	100	15,7	25	9	16
C601100145	---	M16	160	100	15,7	25	9	16
C601100150	---	M16	170	100	15,7	25	9	16
C601100155	---	M16	200	125	15,7	25	9	16
C601100160	---	M16	230	150	15,7	25	9	16
C601100165	---	M16	250	150	15,7	25	9	16

Codice	€	D	L (mm)	B (mm)	A (mm)	T (mm)	H (mm)	Cava (mm)
C601100170	---	M18	80	55	17,7	28	10	18
C601100175	---	M18	100	65	17,7	28	10	18
C601100180	---	M18	125	85	17,7	28	10	18
C601100185	---	M18	150	100	17,7	28	10	18
C601100190	---	M18	170	100	17,7	28	10	18
C601100195	---	M18	200	125	17,7	28	10	18
C601100200	---	M18	230	150	17,7	28	10	18
C601100205	---	M20	80	55	19,7	32	12	20
C601100210	---	M20	100	63	19,7	32	12	20
C601100215	---	M20	125	85	19,7	32	12	20
C601100220	---	M20	150	100	19,7	32	12	20
C601100225	---	M20	160	110	19,7	32	12	20
C601100230	---	M20	170	100	19,7	32	12	20
C601100235	---	M20	200	125	19,7	32	12	20
C601100240	---	M20	230	150	19,7	32	12	20
C601100245	---	M20	315	190	19,7	32	12	20
C601100250	---	M22	80	55	21,7	35	14	22
C601100255	---	M22	100	63	21,7	35	14	22
C601100260	---	M22	125	85	21,7	35	14	22
C601100265	---	M22	150	100	21,7	35	14	22
C601100270	---	M22	170	100	21,7	35	14	22
C601100275	---	M22	200	125	21,7	35	14	22
C601100280	---	M22	230	150	21,7	35	14	22
C601100285	---	M24	80	55	23,7	40	16	24
C601100290	---	M24	100	70	23,7	40	16	24
C601100295	---	M24	125	85	23,7	40	16	24
C601100300	---	M24	150	100	23,7	40	16	24
C601100305	---	M24	160	110	23,7	40	16	24
C601100310	---	M24	170	100	23,7	40	16	24
C601100315	---	M24	200	125	23,7	40	16	24
C601100320	---	M24	230	150	23,7	40	16	24
C601100325	---	M24	250	150	23,7	40	16	24

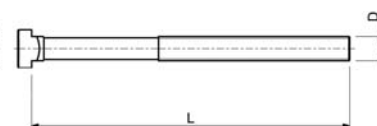
2

FISSAGGIO E STAFFAGGIO



Vite per cave a T per testa romboidale

Vite per cave a T per testa romboidale, filettatura rollata.



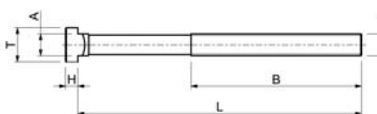
Codice	€	D	L (mm)	Cava (mm)
C603790120	---	M12	50	14
C603790121	---	M12	80	14
C603790122	---	M12	125	14
C603790160	---	M16	63	18
C603790161	---	M16	100	18
C603790162	---	M16	160	18

Codice	€	D	L (mm)	Cava (mm)
C603791111	---	M20	50	22
C603790201	---	M20	125	22
C603790202	---	M20	200	22
C603790240	---	M24	100	28
C603790241	---	M24	125	28
C603790242	---	M24	250	28



Vite per cave a T testa maggiorata

Vite per cave a T con testa maggiorata in acciaio 42CrMoS4, **classe 10.9**, filettatura rollata.



Codice	€	D	L (mm)	B (mm)	A (mm)	T (mm)	H (mm)	Cava (mm)
C601250005	---	M16	93	55	15,7	28	12	16
C601250010	---	M16	120	75	15,7	28	12	16
C601250015	---	M16	150	100	15,7	28	12	16
C601250020	---	M16	200	125	15,7	28	12	16
C601250025	---	M16	225	160	15,7	28	12	16
C601250030	---	M16	250	160	15,7	28	12	16
C601250035	---	M16	300	180	15,7	28	12	16
C601250040	---	M18	120	75	17,7	35	14	18

Codice	€	D	L (mm)	B (mm)	A (mm)	T (mm)	H (mm)	Cava (mm)
C601250045	---	M18	150	100	17,7	35	14	18
C601250050	---	M18	200	125	17,7	35	14	18
C601250055	---	M18	225	150	17,7	35	14	18
C601250060	---	M18	250	150	17,7	35	14	18
C601250065	---	M18	300	190	17,7	35	14	18
C601250070	---	M20	120	75	19,7	40	16	20
C601250075	---	M20	150	100	19,7	40	16	20
C601250080	---	M20	200	125	19,7	40	16	20

Codice	€	D	L (mm)	B (mm)	A (mm)	T (mm)	H (mm)	Cava (mm)
C601250085	---	M20	225	150	19,7	40	16	20
C601250090	---	M20	250	150	19,7	40	16	20
C601250095	---	M20	300	190	19,7	40	16	20
C601250100	---	M24	120	75	23,7	44	20	24
C601250105	---	M24	150	100	23,7	44	20	24

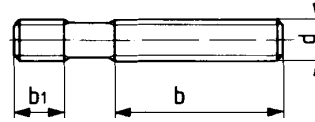
Codice	€	D	L (mm)	B (mm)	A (mm)	T (mm)	H (mm)	Cava (mm)
C601250110	---	M24	200	125	23,7	44	20	24
C601250115	---	M24	225	150	23,7	44	20	24
C601250120	---	M24	250	150	23,7	44	20	24
C601250125	---	M24	300	190	23,7	44	20	24

2

format Prigioniero singolo

Prigioniero singolo in acciaio 42CrMoS4, da M6-M12 classe 10.9 e M14-M24 classe 8.8, filettatura rollata, DIN 6379.

DIN 6379



Codice	€	d	b (mm)	L (mm)	b1 (mm)
C609010001	---	M6	16	32	9
C609010003	---	M6	30	40	9
C609010005	---	M6	50	50	9
C609010006	---	M8	20	63	11
C609010007	---	M8	40	80	11
C609010008	---	M8	63	40	11
C609010011	---	M8	75	63	11
C609010009	---	M8	100	80	11
C609010010	---	M10	25	100	13
C609010020	---	M10	50	125	13
C609010030	---	M10	75	160	13
C609010040	---	M10	122	200	13
C609010050	---	M12	25	50	15
C609010060	---	M12	32	63	15
C609010070	---	M12	50	80	15
C609010080	---	M12	63	100	15
C609010090	---	M12	75	125	15
C609010100	---	M12	122	200	15
C609010110	---	M14	32	63	17
C609010115	---	M14	50	80	17

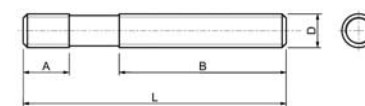
Codice	€	d	b (mm)	L (mm)	b1 (mm)
C609010120	---	M14	63	100	17
C609010125	---	M14	75	125	17
C609010130	---	M14	100	160	17
C609010135	---	M14	160	250	17
C609010140	---	M16	32	63	19
C609010150	---	M16	50	80	19
C609010160	---	M16	63	100	19
C609010170	---	M16	75	125	19
C609010180	---	M16	100	160	19
C609010190	---	M16	160	250	19
C609010200	---	M20	32	80	27
C609010210	---	M20	70	125	27
C609010220	---	M20	122	200	27
C609010230	---	M20	160	250	27
C609010240	---	M20	190	315	27
C609010250	---	M20	315	500	27
C609010300	---	M24	45	100	35
C609010310	---	M24	100	160	35
C609010320	---	M24	160	250	35
C609010330	---	M24	250	400	35



Prigioniero singolo

Prigioniero singolo in acciaio 42CrMoS4, classe 10.9, filettatura rollata, DIN 6379.

DIN 6379



Codice	€	D	L (mm)	A (mm)	B (mm)
C601200005	---	M8	40	11	20
C601200010	---	M8	63	11	40
C601200015	---	M8	80	11	50
C601200020	---	M8	100	11	63
C601200025	---	M8	125	11	75
C601200030	---	M8	160	11	100
C601200035	---	M8	200	11	100
C601200040	---	M10	50	13	25
C601200045	---	M10	63	13	35
C601200050	---	M10	80	13	50
C601200055	---	M10	100	13	75
C601200060	---	M10	120	13	75
C601200065	---	M10	160	13	100
C601200070	---	M10	200	13	125
C601200075	---	M12	50	15	25
C601200080	---	M12	63	15	32
C601200085	---	M12	80	15	50
C601200090	---	M12	100	15	63
C601200095	---	M12	125	15	75
C601200100	---	M12	160	15	100
C601200105	---	M12	200	15	125
C601200110	---	M12	225	15	160
C601200115	---	M12	250	15	160
C601200120	---	M14	63	17	32
C601200125	---	M14	80	17	50
C601200130	---	M14	100	17	63
C601200135	---	M14	125	17	75
C601200140	---	M14	160	17	100
C601200145	---	M14	200	17	125
C601200150	---	M14	225	17	160

Codice	€	D	L (mm)	A (mm)	B (mm)
C601200155	---	M14	250	17	160
C601200160	---	M16	63	19	35
C601200165	---	M16	80	19	50
C601200170	---	M16	100	19	63
C601200175	---	M16	125	19	75
C601200180	---	M16	160	19	100
C601200185	---	M16	200	19	125
C601200190	---	M16	225	19	160
C601200195	---	M16	250	19	160
C601200200	---	M16	315	19	180
C601200205	---	M18	80	23	50
C601200210	---	M18	100	23	50
C601200215	---	M18	125	23	75
C601200220	---	M18	160	23	100
C601200225	---	M18	200	23	125
C601200230	---	M18	225	23	150
C601200235	---	M18	250	23	150
C601200240	---	M18	315	23	180
C601200245	---	M20	80	27	30
C601200250	---	M20	125	27	70
C601200255	---	M20	160	27	100
C601200260	---	M20	200	27	125
C601200265	---	M20	225	27	160
C601200270	---	M20	250	27	160
C601200275	---	M20	315	27	200
C601200280	---	M22	100	31	45
C601200285	---	M22	120	31	63
C601200290	---	M22	160	31	100
C601200295	---	M22	200	31	125
C601200300	---	M22	225	31	160