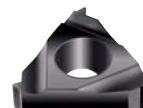


TKN Inserto in metallo duro filettatura interna

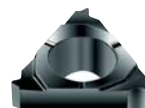
Inserto a profilo completo per filettatura interna sinistra ISO 60°, per operazioni di filettatura su tutti i materiali.



NL-M



M 35

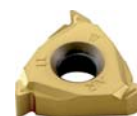


PK 25 - PK 30

| Codice | € | Pz. | Tipo | Passo (mm) | | P | M | K | N | S | H |
|------------|-----|------|----------------------|------------|-----------|---------|-------|---------|---------|-------|-------|
| A574500300 | --- | ◇ 10 | TN11 NL 100 M U 9035 | 1 | Vc m/min. | 135-165 | 80-95 | 125-155 | 200-575 | 25-45 | 25-30 |
| A574500400 | --- | ◇ 10 | TN11 NL 125 M U 9035 | 1,25 | Vc m/min. | 135-165 | 80-95 | 125-155 | 200-575 | 25-45 | 25-30 |
| A574500500 | --- | ◇ 10 | TN11 NL 150 M U 9035 | 1,5 | Vc m/min. | 135-165 | 80-95 | 125-155 | 200-575 | 25-45 | 25-30 |
| A574500600 | --- | ◇ 10 | TN16 NL 100 M U 9035 | 1 | Vc m/min. | 135-165 | 80-95 | 125-155 | 200-575 | 25-45 | 25-30 |
| A574500700 | --- | ◇ 10 | TN16 NL 125 M U 9035 | 1,25 | Vc m/min. | 135-165 | 80-95 | 125-155 | 200-575 | 25-45 | 25-30 |
| A574500800 | --- | ◇ 10 | TN16 NL 150 M U 9035 | 1,5 | Vc m/min. | 135-165 | 80-95 | 125-155 | 200-575 | 25-45 | 25-30 |
| A574500900 | --- | ◇ 10 | TN16 NL 175 M U 9035 | 1,75 | Vc m/min. | 135-165 | 80-95 | 125-155 | 200-575 | 25-45 | 25-30 |
| A574501000 | --- | ◇ 10 | TN16 NL 200 M U 9035 | 2 | Vc m/min. | 135-165 | 80-95 | 125-155 | 200-575 | 25-45 | 25-30 |

TKN Inserto in metallo duro filettatura interna

Inserto a profilo completo per filettatura interna destra Whitworth 55°, per operazioni di filettatura su tutti i materiali.



NR-W

| Codice | € | Pz. | Tipo | fil/1" | | P | M | K | N | S | H |
|------------|-----|------|----------------------|--------|-----------|---------|-------|---------|---------|-------|-------|
| A573300080 | --- | ◇ 10 | TN11 NR 140 W U 9035 | 14 | Vc m/min. | 135-165 | 80-95 | 125-155 | 200-575 | 25-45 | 25-30 |
| A573300090 | --- | ◇ 10 | TN11 NR 190 W U 9035 | 19 | Vc m/min. | 135-165 | 80-95 | 125-155 | 200-575 | 25-45 | 25-30 |
| A573300260 | --- | ◇ 10 | TN16 NR 080 W U 9035 | 8 | Vc m/min. | 135-165 | 80-95 | 125-155 | 200-575 | 25-45 | 25-30 |
| A573300280 | --- | ◇ 10 | TN16 NR 100 W U 9035 | 10 | Vc m/min. | 135-165 | 80-95 | 125-155 | 200-575 | 25-45 | 25-30 |
| A573300290 | --- | ◇ 10 | TN16 NR 110 W U 9035 | 11 | Vc m/min. | 135-165 | 80-95 | 125-155 | 200-575 | 25-45 | 25-30 |
| A573300310 | --- | ◇ 10 | TN16 NR 140 W U 9035 | 14 | Vc m/min. | 135-165 | 80-95 | 125-155 | 200-575 | 25-45 | 25-30 |
| A573300320 | --- | ◇ 10 | TN16 NR 160 W U 9035 | 16 | Vc m/min. | 135-165 | 80-95 | 125-155 | 200-575 | 25-45 | 25-30 |
| A573300330 | --- | ◇ 10 | TN16 NR 190 W U 9035 | 19 | Vc m/min. | 135-165 | 80-95 | 125-155 | 200-575 | 25-45 | 25-30 |

TKN Set di inserti in metallo duro filettatura interna

Set di inserti a profilo completo per filettatura interna destra ISO 60°, per operazioni di filettatura su tutti i materiali.



| Codice | € | Tipo | Passo (mm) | | P | M | K | N | S | H |
|------------|-----|-----------------------|--------------------------------|-----------|---------|---|--------|---|---|---|
| A579691300 | --- | ◇ TN 11 IR M PK 25-35 | 0,5x2-0,75x2-1x2-1,25x2-1,5x2 | Vc m/min. | 100-150 | - | 90-125 | - | - | - |
| A579691310 | --- | ◇ TN 16 IR M PK 25-35 | 0,75x2-1x2-1,25x2-1,5x2-1,75x2 | Vc m/min. | 100-150 | - | 90-125 | - | - | - |

TKN Set di inserti in metallo duro filettatura interna

Set di inserti a profilo completo per filettatura interna sinistra ISO 60°, per operazioni di filettatura su tutti i materiali.



| Codice | € | Tipo | Passo (mm) | | P | M | K | N | S | H |
|------------|-----|-----------------------|--------------------------------|-----------|---------|---|--------|---|---|---|
| A579691305 | --- | ◇ TN 11 IL M PK 25-35 | 0,5x2-0,75x2-1x2-1,25x2-1,5x2 | Vc m/min. | 100-150 | - | 90-125 | - | - | - |
| A579691315 | --- | ◇ TN 16 IL M PK 25-35 | 0,75x2-1x2-1,25x2-1,5x2-1,75x2 | Vc m/min. | 100-150 | - | 90-125 | - | - | - |